

SCP160G5

SANY

Quality Changes the World



HEAVY LOADS HANDLED WITH EASE

POWERFUL. AGILE. RELIABLE.



HEAVY-DUTY FORKLIFT
SCP160G5

Lifting capacity
16000 kg

Engine
CUMMINS QSB6.7

Emission standard
EU Stage V

Rated power
168 kW

HEAVY-DUTY FORKLIFT

- + Optimum weight distribution
- + Fast lifting speed
- + Powerful drive system
- + Reduced tire wear

Operating mass
23 000 kg
Max. lifting speed
450 mm/s
Max. travel speed
25 km/h



ENGINE

| | |
|-------------------|----------------------|
| Model | CUMMINS QSB6.7 |
| Rated power | 168 kW / 2 200 rpm |
| Emission standard | EU Stage V |
| Gearbox type | DANA 13.7FLTE14415 |
| Torque | 1 044 nm / 1 500 rpm |

DIMENSIONS

| | |
|--------------------------|----------|
| Total length | 8 144 mm |
| Transport width | 2 640 mm |
| Transport height | 3 438 mm |
| Load centre | 1 200 mm |
| Wheel base | 3 750 mm |
| Front overhang | 1 044 mm |
| Rear overhang | 910 mm |
| Min. ground clearance | 300 mm |
| Seat height above ground | 1 963 mm |
| Inner turning radius | 685 mm |
| Outer turning radius | 5 200 mm |
| Front tyre track width | 1 898 mm |
| Rear tyre track width | 2 089 mm |

AXLES

| | |
|------------|------------------|
| Front axle | KESSLER-D81PL478 |
|------------|------------------|

TYRES

| | |
|----------------|----------|
| Tyre dimension | 12.00-20 |
|----------------|----------|

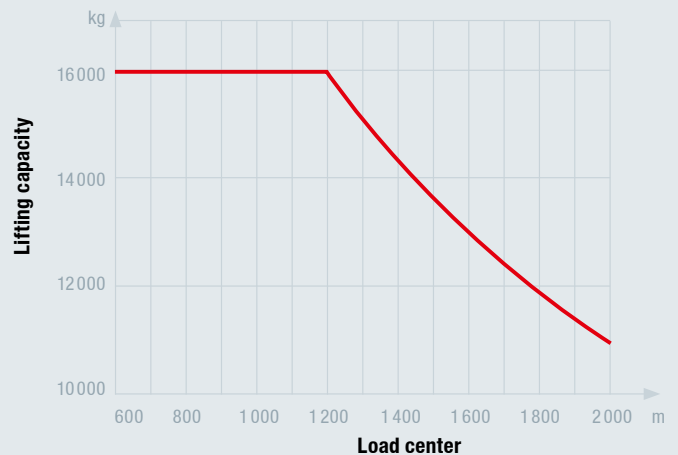
DRIVING AND LIFTING PERFORMANCE

| | |
|----------------------------------|----------------|
| Lifting capacity | 16 000 kg |
| Lifting speed without/with load | 450 / 400 mm/s |
| Lowering speed without/with load | 500 / 500 mm/s |
| Gradeability without/with load | 39% |
| Lifting height | 4 000 mm |

FORKLIFT / MAST

| | |
|------------------------------------|----------------------|
| Fork dimension (w x h x l) | 200 x 100 x 2 440 mm |
| Fork distance (minimum / maximum) | 674 / 2 274 mm |
| Mast height (retracted / extended) | 3 754 / 5 704 mm |
| Mast tilt (forward / backwards) | 15° / 12° |

LOAD CHART



Not all products are available in all markets. As part of our continuous improvement process, we reserve the right to modify specifications and designs without giving prior notice. The figures may contain additional options.

SANY

Quality Changes the World

SANY EUROPE GmbH
Sany Allee 1
D-50181 Bedburg
Tel. +49 2272 90531 100
Fax +49 2272 90531 109
info@sanyeurope.com
www.sanyeurope.com