

## More features, more possibilities

All SANY telehandlers are comprehensively equipped as standard. With numerous options and attachments, they can be individually configured as necessary – leaving them perfectly equipped for their respective requirements.

Other than attachment or special options the below is standard specification



### OPERATING COMFORT/CAB

- Ten-inch touchscreen display and encoder navigation
- Air conditioning\*
- Radio with Bluetooth and microphone
- Adjustable seat with suspension
- 12V power socket
- Sunblind, roof and front screen
- Heated rear screen
- Front, roof and rear wiper and washers
- Armrest with storage and USB charger
- Cup and bottle holders
- Fully adjustable steering column
- Intuitive keypad functions (all backlit)
- Telematics

### SAFETY

- CE / UKCA-certified
- ROPS ISO:3471:2008 and FOPS ISO:3449:2005
- Reversing alarm
- Hi-viz seatbelt
- Integrated reversing camera and distance sensor
- Seat switch and green 'ready' beacon
- Load weight monitoring
- Load moment indicator display

### WORK EQUIPMENT

- Standard SANY fast fit carriage with 1200mm forks
- Manitou carriage with fork frame (optional)
- Three steering modes: 4WS, 2WS and crab
- Chassis levelling +/-9 degrees (STH1440 & STH1840)
- Fully proportional joystick
- Auxiliary hydraulic venting from cab

### WORKING LIGHTS LED

- Working lights on cab and boom
- Full road lights



## Absolute reliability – for peace of mind!

SANY has earned a reputation worldwide for reliability, durability and performance but to provide peace of mind and to ensure maximum uptime all SANY telehandlers are backed by a SANY 3 year warranty\*\*

\*\* Terms and conditions apply. Check with your local dealer for more information.

\*The air-conditioning system contains fluorinated greenhouse gases: Refrigerant type: HFC 134a, global warming potential: 1430, quantity: 65 kg, CO2e: 0.933 tonnes.

## ATTACHMENTS

### GENERAL PURPOSE BUCKET

For transporting loose and bulk material with a bucket capacity of 1 m<sup>3</sup>.



### HYDRAULIC FORK POSITIONERS

Control your forks widths from your fingertips, saving time when changing loads and eliminates leaving the cab.

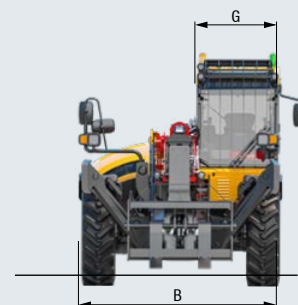
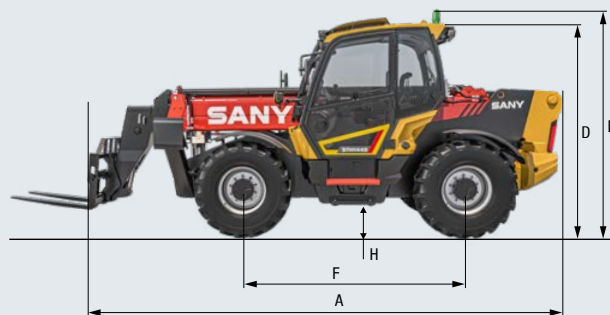
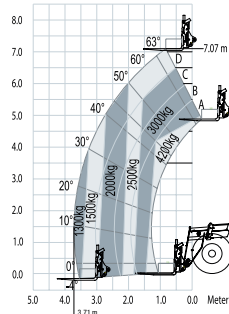


### 4,000 KG CRANE HOOK

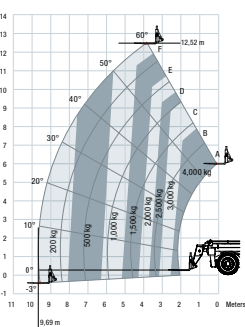
Can be easily fitted to SANY's Fast Fit Carriage for suspended loads when handling slung material. (Included as standard on STH1440 & STH1840)



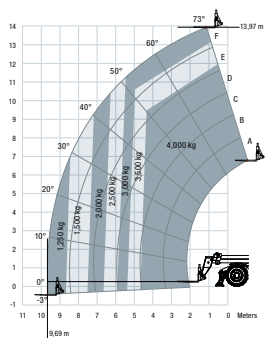
## STH742



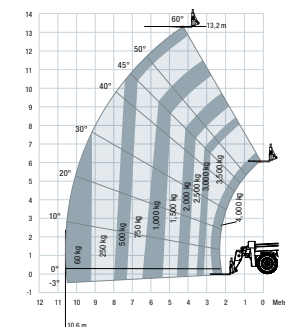
## STH1440 – OUTRIGGERS UP



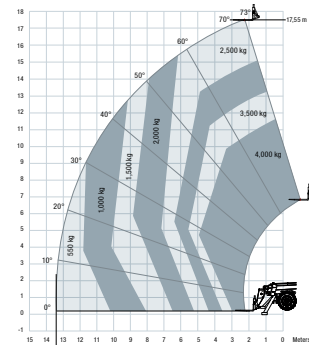
## STH1440 – OUTRIGGERS DOWN



## STH1840 – OUTRIGGERS UP



## STH1840 – OUTRIGGERS DOWN



		STH742	STH1440	STH1840
<b>OPERATING WEIGHT</b>	kg	8,325	10,980	12,300
<b>PERFORMANCE PARAMETERS</b>				
Maximum lift capacity	kg	4,200	4,000	4,000
Lift capacity at maximum height	kg	2,500	3,000	2,500
Lift capacity at maximum reach	kg	1,300	1,250	550
Lift height	mm	7,070	13,970	17,550
Carriage crowd angle	°	45	37	37
Carriage dump angle	°	21	13	13
Frame levelling +/-	°	NA	9	9
Outside turning radius (4WS)	mm	3,850	3,850	3,850
Auxiliary hydraulic flow	l/min	60	60	60
Auxiliary hydraulic pressure	MPa	30	28	28
Noise at driving position (55 kW)	Lpa	75	75	75
Noise to environment (55 kW)	Lwa	105	105	105
<b>BOOM PARAMETERS</b>				
Boom (raise/lower)	sec	8/6	18/13	15/12
Boom (extend/retract)	sec	6.5/4.5	15/13	16/19
<b>TYRES</b>				
Type/size		460/70R24	400/80-24	400/80-24
<b>DIMENSIONS</b>				
A Length to front of carriage	mm	4,990	6,160	6,200
B Overall width	mm	2,350	2,420	2,420
C Overall width stabilisers fully deployed	mm	NA	2,570	3,400
D Height over cab without beacon	mm	2,540	2,590	2,590
E Height over cab with beacon	mm	2,665	2,750	2,750
F Wheelbase	mm	2,750	2,750	2,750
G Overall cabin width	mm	950	950	950
H Ground clearance	mm	400	370	370
<b>ENGINE</b>				
Engine brand Deutz		Deutz	Deutz	Deutz
Engine emission		Stage v	Stage v	Stage v
Engine model		TD 3.6L	TD 3.6L	TD 3.6L
<b>TRANSMISSION</b>				
Transmission type		Hydrostatic	Hydrostatic	Hydrostatic
Transmission brand		Dana	Dana	Dana
Max. travel speed	kph	30	27	27
<b>BRAKING</b>				
Parking brake		SAHR	SAHR	SAHR
Service brake		Oil-immersed multi-discs braking on front & rear axle		
<b>HYDRAULICS SYSTEM</b>				
Hydraulic pump type		Gear with priority valve		
System pressure	bar	300	280	280
Hydraulic flow	l/min	95	100	100
<b>CABIN</b>				
Cabin is ROPS & FOPS tested & conforms to IOS 3471/3449				